

A

Seminar report

On

**OLED**

Submitted in partial fulfillment of the requirement for the award of degree  
Of ECE

SUBMITTED TO:

[www.studymafia.org](http://www.studymafia.org)

SUBMITTED BY:

[www.studymafia.org](http://www.studymafia.org)

WWW.Studymafia.Org

## Acknowledgement

I would like to thank respected Mr..... and Mr. ....for giving me such a wonderful opportunity to expand my knowledge for my own branch and giving me guidelines to present a seminar report. It helped me a lot to realize of what we study for.

Secondly, I would like to thank my parents who patiently helped me as i went through my work and helped to modify and eliminate some of the irrelevant or un-necessary stuffs.

Thirdly, I would like to thank my friends who helped me to make my work more organized and well-stacked till the end.

Next, I would thank Microsoft for developing such a wonderful tool like MS Word. It helped my work a lot to remain error-free.

Last but clearly not the least, I would thank The Almighty for giving me strength to complete my report on time.

WWW.Studymafia.Org

## Preface

I have made this report file on the topic **OLED**: I have tried my best to elucidate all the relevant detail to the topic to be included in the report. While in the beginning I have tried to give a general view about this topic.

My efforts and wholehearted co-corporation of each and everyone has ended on a successful note. I express my sincere gratitude to .....who assisting me throughout the preparation of this topic. I thank him for providing me the reinforcement, confidence and most importantly the track for the topic whenever I needed it.

WWW.Studymafia.Org

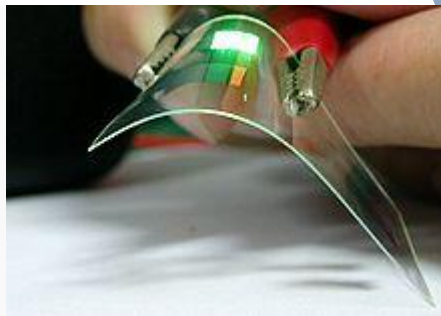
## **CONTENTS**

- **Introduction**
- **History**
- **Working principle**
- **Components of OLED**
- **How OLED works**
- **OLED structure**
- **How do OLEDs Emit Light?**
- **Types of OLEDs**
- **OLED Advantages and Disadvantages**
- **Problems with OLED**

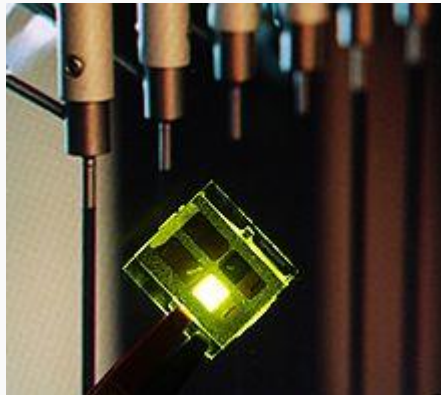
## **What is an OLED?**

OLED's are simple solid-state devices (more of an LED) comprised of very thin films of organic compounds in the electro-luminescent layer. These organic compounds have a special property of creating light when electricity is applied to it. The organic compounds are designed to be in between two electrodes. Out of these one of the electrodes should be transparent. The result is a very bright and crispy display with power consumption lesser than the usual LCD and LED.

Organic light emitting diode



Demonstration of a flexible OLED device



A green emitting OLED device



Sony XEL-1, the world's first OLED TV.

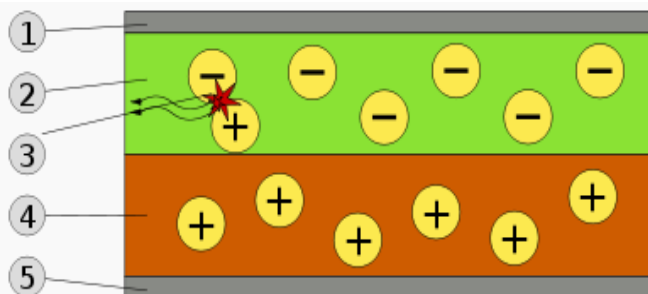
An organic light emitting diode (OLED) is a light-emitting diode (LED) in which the emissive electroluminescent layer is a film of organic compounds which emit light in response to an electric current. This layer of organic semiconductor material is situated between two electrodes. Generally, at least one of these electrodes is transparent.

### **Introduction and history of OLED -**

The discovery of the electroluminescence property in organic materials in 1950s is considered to be the stepping stone of OLED.

The first proper OLED was manufactured in 1980 by Dr. Ching W Tang and Steven Van Slyke. The OLED had a double layer structure. When the holes and electrons were transported separately and when combined together produced a light in the organic layer centre. This light was produced at a very low operating voltage with high efficiency. Now more research is being done with the application of OLED on polymer so as to obtain a higher efficiency OLED.

### **Working principle-**



Schematic of a bilayer OLED:

1. Cathode (-).
2. Emissive Layer.
3. Emission of radiation.
4. Conductive Layer.
5. Anode (+).

A typical OLED is composed of a layer of organic materials situated between two electrodes, the anode and cathode, all deposited on a substrate. The organic molecules are electrically conductive as a result of delocalization of pi electrons caused by conjugation over all or part of the molecule.

### **Components in an OLED -**

The components in an OLED differ according to the number of layers of the organic material. There is a basic single layer OLED, two layer and also three layer OLED's. As the number of layers increase the efficiency of the device also increases. The increase in layers also helps in injecting charges at the electrodes and thus helps in blocking a charge from being dumped after reaching the opposite electrode. Any type of OLED consists of the following components.

1. An emissive layer
2. A conducting layer
3. A substrate
4. Anode and cathode terminals.

## How OLEDs Work-

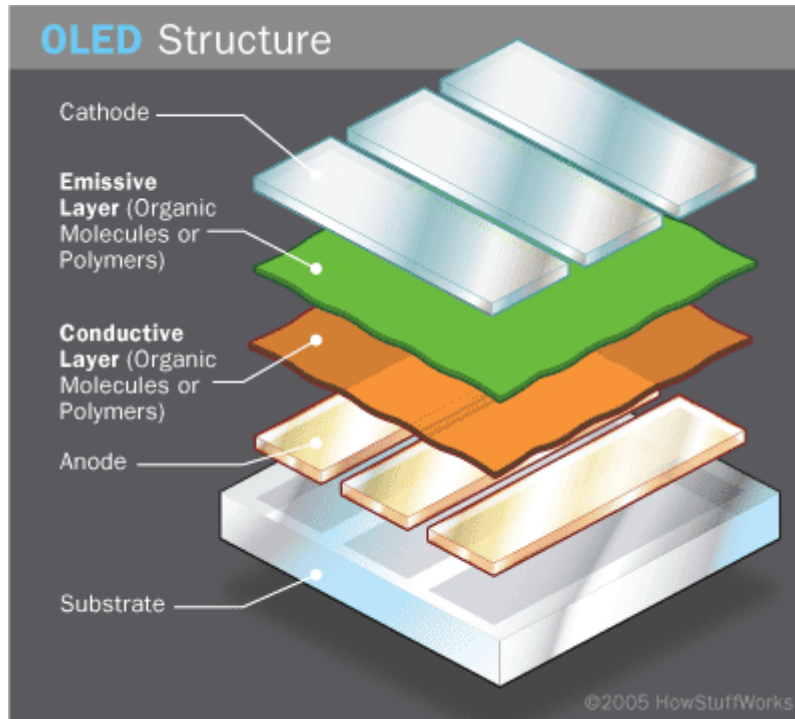
OLEDs are solid-state devices composed of thin films of organic molecules that create light with the application of electricity. OLEDs can provide brighter, crisper displays on electronic devices and use less power than conventional light-emitting diodes (LEDs) or liquid crystal displays (LCDs) used today.



## OLED Components-

Like an LED, an OLED is a solid-state semiconductor device that is 100 to 500 nanometers thick or about 200 times smaller than a human hair. OLEDs can have either two layers or three layers of organic material; in the latter design, the third layer helps transport electrons from the cathode to the emissive layer. In this article, we'll be focusing on the two-layer design.



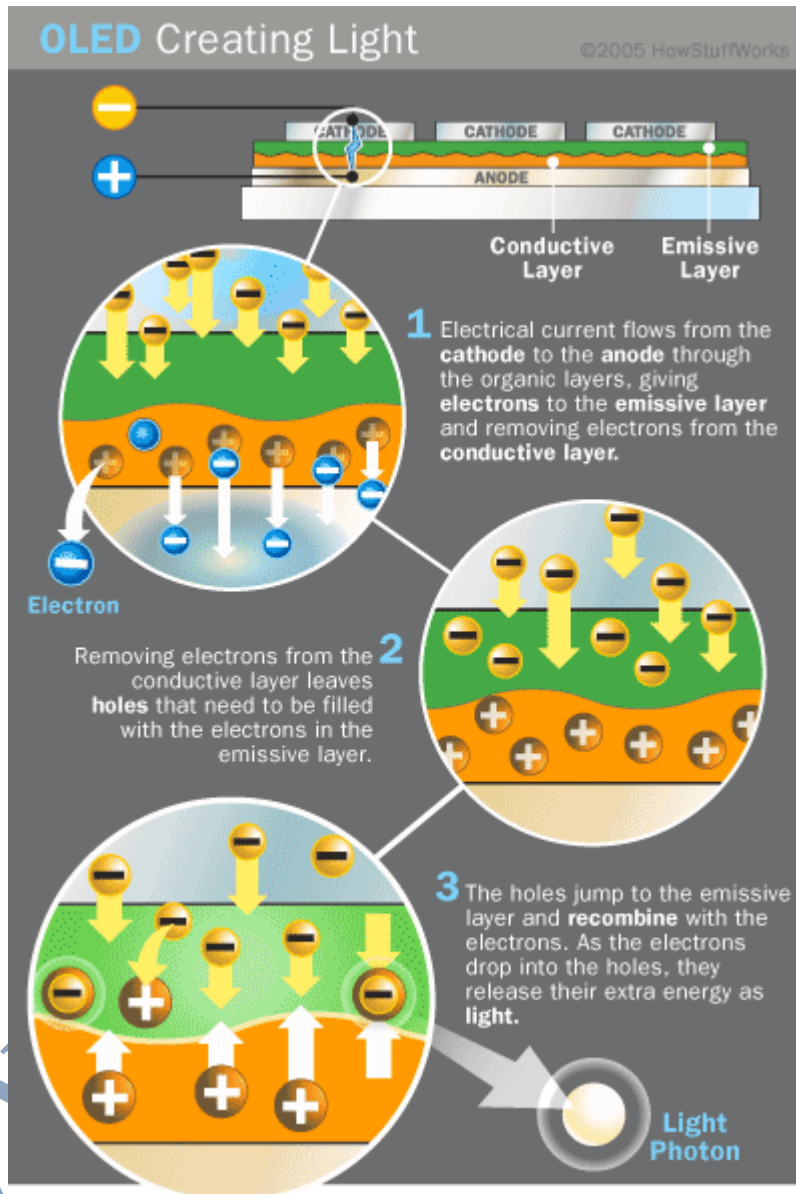


An OLED consists of the following parts:

- **Substrate** (clear plastic, glass, foil) - The substrate supports the OLED.
- **Anode** (transparent) - The anode removes electrons (adds electron "holes") when a current flows through the device.
- **Organic layers** - These layers are made of organic molecules or polymers.
  - **Conducting layer** - This layer is made of organic plastic molecules that transport "holes" from the anode. One conducting polymer used in OLEDs is polyaniline.
  - **Emissive layer** - This layer is made of organic plastic molecules (different ones from the conducting layer) that transport electrons from the cathode; this is where light is made. One polymer used in the emissive layer is polyfluorene.
- **Cathode** (may or may not be transparent depending on the type of OLED) - The cathode injects electrons when a current flows through the device.

### How do OLEDs Emit Light?

OLEDs emit light in a similar manner to LEDs, through a process called **electrophosphorescence**.



The process is as follows:

1. The battery or power supply of the device containing the OLED applies a voltage across the OLED.

2. An electrical current flows from the cathode to the anode through the organic layers (an electrical current is a flow of electrons).
  - The cathode gives electrons to the emissive layer of organic molecules.
  - The anode removes electrons from the conductive layer of organic molecules. (This is the equivalent to giving electron holes to the conductive layer.)
3. At the boundary between the emissive and the conductive layers, electrons find electron holes.
  - When an electron finds an electron hole, the electron fills the hole (it falls into an energy level of the atom that's missing an electron).
  - When this happens, the electron gives up energy in the form of a photon of light (see How Light Works).
4. The OLED emits light.
5. The color of the light depends on the type of organic molecule in the emissive layer. Manufacturers place several types of organic films on the same OLED to make color displays.
6. The intensity or brightness of the light depends on the amount of electrical current applied: the more current, the brighter the light.

### **Types of OLEDs: Passive and Active Matrix**

There are several types of OLEDs:

- Passive-matrix OLED
- Active-matrix OLED
- Transparent OLED
- Top-emitting OLED
- Foldable OLED
- White OLED

### OLED Advantages and Disadvantages -

The LCD is currently the display of choice in small devices and is also popular in large-screen TVs. Regular LEDs often form the digits on digital clocks and other electronic devices. OLEDs offer many advantages over both LCDs and LEDs:

- The plastic, organic layers of an OLED are **thinner, lighter and more flexible** than the crystalline layers in an LED or LCD.
- Because the light-emitting layers of an OLED are lighter, the substrate of an OLED can be **flexible** instead of rigid. OLED substrates can be plastic rather than the glass used for LEDs and LCDs.
- OLEDs are **brighter** than LEDs.
- OLEDs do not require backlighting like LCDs.
- OLEDs are easier to produce and can be made to larger sizes. Because OLEDs are essentially plastics, they can be made into large, thin sheets. It is much more difficult to grow and lay down so many liquid crystals.

### Problems with OLED -

OLED seems to be the perfect technology for all types of displays, but it also has some problems:

- **Lifetime** - While red and green OLED films have longer lifetimes (46,000 to 230,000 hours), blue organics currently have much shorter lifetimes (up to around 14,000 hours).
- **Manufacturing** - Manufacturing processes are expensive right now.
- **Water** - Water can easily damage OLEDs.

## REFERENCES

- [www.google.com](http://www.google.com)
- [www.wikipedia.com](http://www.wikipedia.com)
- [www.studymafia.org](http://www.studymafia.org)
- [www.pptplanet.com](http://www.pptplanet.com)

WWW.Studymafia.Org